



**A J Metal Products Ltd**  
Bevan Industrial Estate  
Bevan Road  
Brierley Hill  
West Midlands  
DY5 3TF  
United Kingdom  
office +44 (0)1384 74301  
fax +44(0)1384 485772

# **AJMP e-brochure**

## **Standard Range of Air Receivers.**





# Standard Range of Air Receivers.

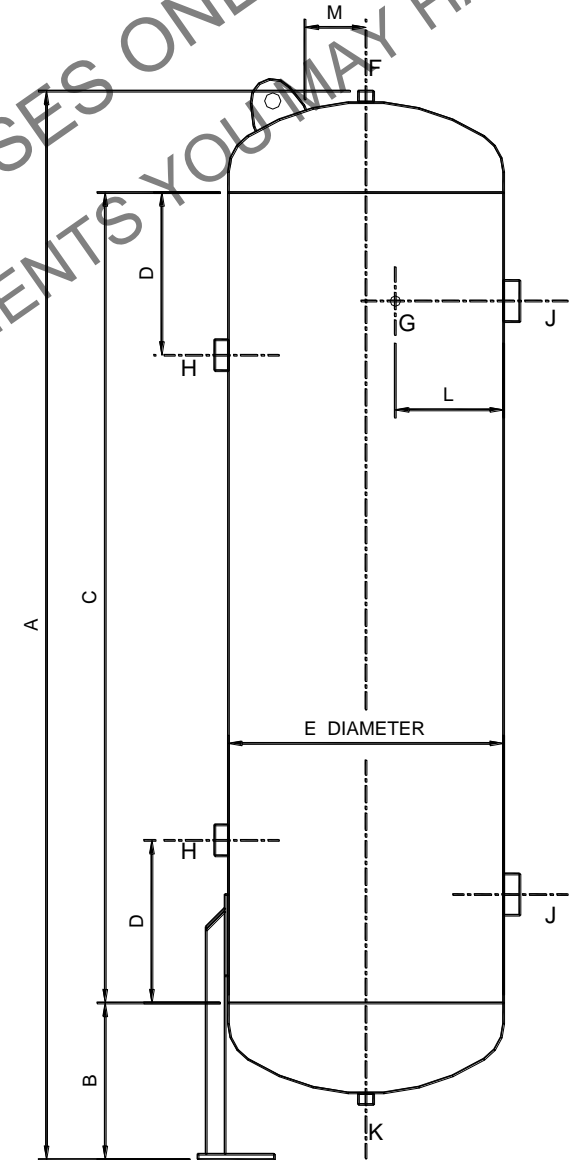
## Vertical Air Receivers - 50 to 1000 Litres.

Vessel Size in litres													
	50	80	120	150	200	230	300	350	500	570	800	860	1000
<b>A</b>	1030	1090	1090	1705	1530	1705	1690	1960	2035	2345	2315	2415	2585
<b>B</b>	315	315	315	315	315	315	289	289	338	338	389	389	389
<b>C</b>	610	610	610	1250	1066	1250	1250	1500	1500	1830	1700	1830	2000
<b>D</b>	150	150	150	150	150	203	203	230	230	230	230	230	305
<b>E</b>	305	381	457	381	457	457	508	508	608	608	740	740	740
<b>F</b>	1/4"	1/4"	1/4"	1/4"	3/8"	3/8"	3/8"	3/8"	1/2"	1/2"	1/2"	1/2"	1/2"
<b>G</b>	1/4"	1/4"	1/4"	1/4"	1/4"	1/4"	1/4"	3/8"	3/8"	3/8"	3/8"	3/8"	3/8"
<b>H</b>	3/4"	3/4"	3/4"	3/4"	1"	1"	1-1/4"	1-1/4"	2"	2"	2"	2"	2"
<b>J</b>	1-1/4"	2"	2"	2"	2"	2"	2"	2"	2"	4 x 3"	4 x 3"	4 x 3"	4 x 3"
<b>K</b>	3/8"	3/8"	3/8"	3/8"	3/8"	3/8"	1/2"	1/2"	1/2"	1/2"	1/2"	1/2"	1/2"
<b>L</b>	150	150	200	150	200	200	200	200	200	200	200	200	200
<b>M</b>	No lug	No lug	No lug	50	64	64	89	89	100	100	150	150	150
<b>N</b>	75	75	75	75	75	75	75	75	75	150	150	150	150
<b>Weight (kg)</b>	35	42	50	70	85	93	115	130	180	200	242	275	300

### nomenclature:

- |   |                                     |   |   |
|---|-------------------------------------|---|---|
| A | Overall Height                      | G | Pressure gauge port                               |
| B | Height from base to bottom of shell | H | Inlet and outlet port                             |
| C | Shell length                        | J | Inspection ports complete with plugs or covers    |
| D | Distance from end of shell to ports | K | Drain port  |
| E | Outside diameter of shell           | L | Distance from centerline                          |
| F | Relief valve port                   | M | Distance to lifting lug from centre of dished end |
|   |                                     | N | Distance from outlet to top of nameplate          |

All Dims in mm unless otherwise stated.  
All screwed connects BSP.





# Standard Range of Air Receivers.

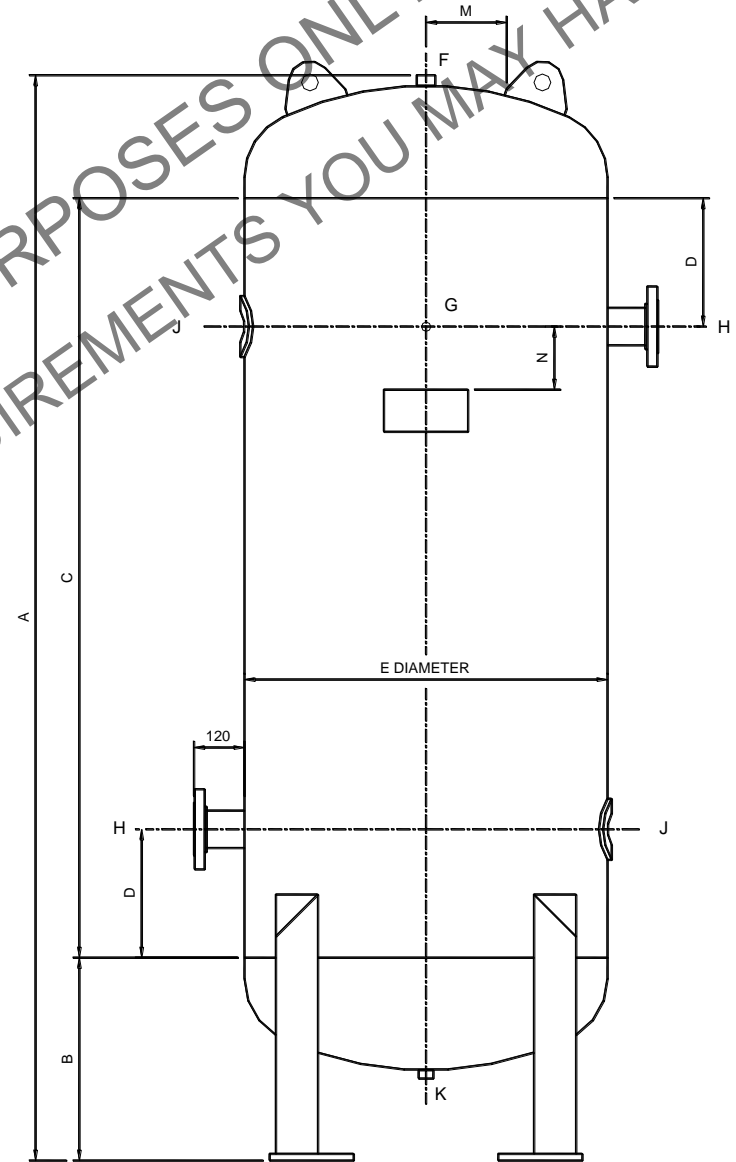
## Vertical Air Receivers - 1200 to 5000 Litres.

Vessel Size in litres						
	1200	1500	2000	2830	3800	5000
<b>A</b>	2300	2630	2750	2900	3900	4920
<b>B</b>	432	432	482	533	533	533
<b>C</b>	1500	2000	2000	2000	3000	4000
<b>D</b>	305	305	305	305	381	381
<b>E</b>	930	930	1016	1246	1246	1246
<b>F</b>	3/4"	3/4"	1"	1"	1"	1"
<b>G</b>	3/8"	3/8"	3/8"	3/8"	3/8"	3/8"
<b>H</b>	3"	3"	4"	4"	4"	6"
<b>J</b>	4" x 3"	4" x 3"	4" x 3"	4" x 3"	4" x 3"	4" x 3" (3 off)
<b>K</b>	3/4"	3/4"	3/4"	3/4"	3/4"	3/4"
<b>L</b>	-	-	-	-	-	-
<b>M</b>	300	300	380	500	500	390
<b>N</b>	150	150	150	150	150	150
<b>Weight (kg)</b>	500	550	650	800	1050	1307

### nomenclature:

A	Overall Height	G	Pressure gauge port
B	Height from base to bottom of shell	H	Inlet and outlet port
C	Shell length	J	Inspection ports complete with plugs or covers
D	Distance from end of shell to ports	K	Drain port
E	Outside diameter of shell	L	Distance from centerline
F	Relief valve port	M	Distance to lifting lug from centre of dished end
		N	Distance from outlet to top of nameplate

All Dims in mm unless otherwise stated.  
All screwed connects BSP.





# Standard Range of Air Receivers.

## Horizontal Air Receivers 50 to 1000 Litres.

Vessel Size in litres													
	50	80	120	150	200	230	300	350	500	570	800	860	1000
<b>A</b>	850	850	965	1540	1415	1605	1630	1880	1920	2250	2190	2320	2930
<b>B</b>	610	610	610	1220	1066	1220	1220	1500	1500	1830	1700	1830	2000
<b>C</b>	305	381	457	381	457	457	508	508	608	608	740	740	740
<b>D &amp; E</b>	1.25"	1.25"	2"	2"	2"	2"	2"	2"	2"	4" x 3"	2"	4" x 3"	4" x 3"
<b>F &amp; H</b>	3/4"	3/4"	3/4"	1"	1"	1"	1"	1"	1"	1.25"	1.25"	1.5"	2"
<b>G</b>	1/4"	1/4"	1/4"	1/4"	3/8"	3/8"	3/8"	3/8"	1/2"	1/2"	1/2"	1/2"	1/2"
<b>J</b>	1/4"	1/4"	1/4"	1/4"	1/4"	1/4"	1/4"	1/4"	3/8"	3/8"	3/8"	3/8"	3/8"
<b>K</b>	3/8"	3/8"	3/8"	3/8"	3/8"	3/8"	1/2"	1/2"	1/2"	1/2"	1/2"	1/2"	1/2"
<b>L</b>	155	155	155	225	225	225	255	255	255	275	275	275	300
<b>M</b>	120	80	80	150	150	150	150	150	150	200	200	200	250
<b>N</b>	40	40	40	50	50	50	50	50	50	50	50	50	50
<b>P</b>	410	610	500	660	710	710	710	1000	1000	1220	1000	1220	1390
<b>Q</b>	100	195	131	305	178	255	255	250	250	305	250	305	305
<b>R</b>	380	380	380	508	610	610	610	610	762	916	916	916	1066
<b>Weight (kg)</b>	35	42	50	70	85	93	115	130	180	200	250	285	300

### nomenclature:

A	Overall Length	G	Relief valve port
B	Shell length	H	Inlet port
C	Diameter	J	Pressure gauge port
D	Inspection port	K	Drain port
E	Screwed plug	L	Distance from weld seam to support saddle
F	Outlet port	M	Distance from weld seam to inlet port
		N	Distance from weld seam to pressure gauge port
		P	Distance between holes in support legs
		Q	Distance to holes in support legs from weld seam
		R*	Top saddle length

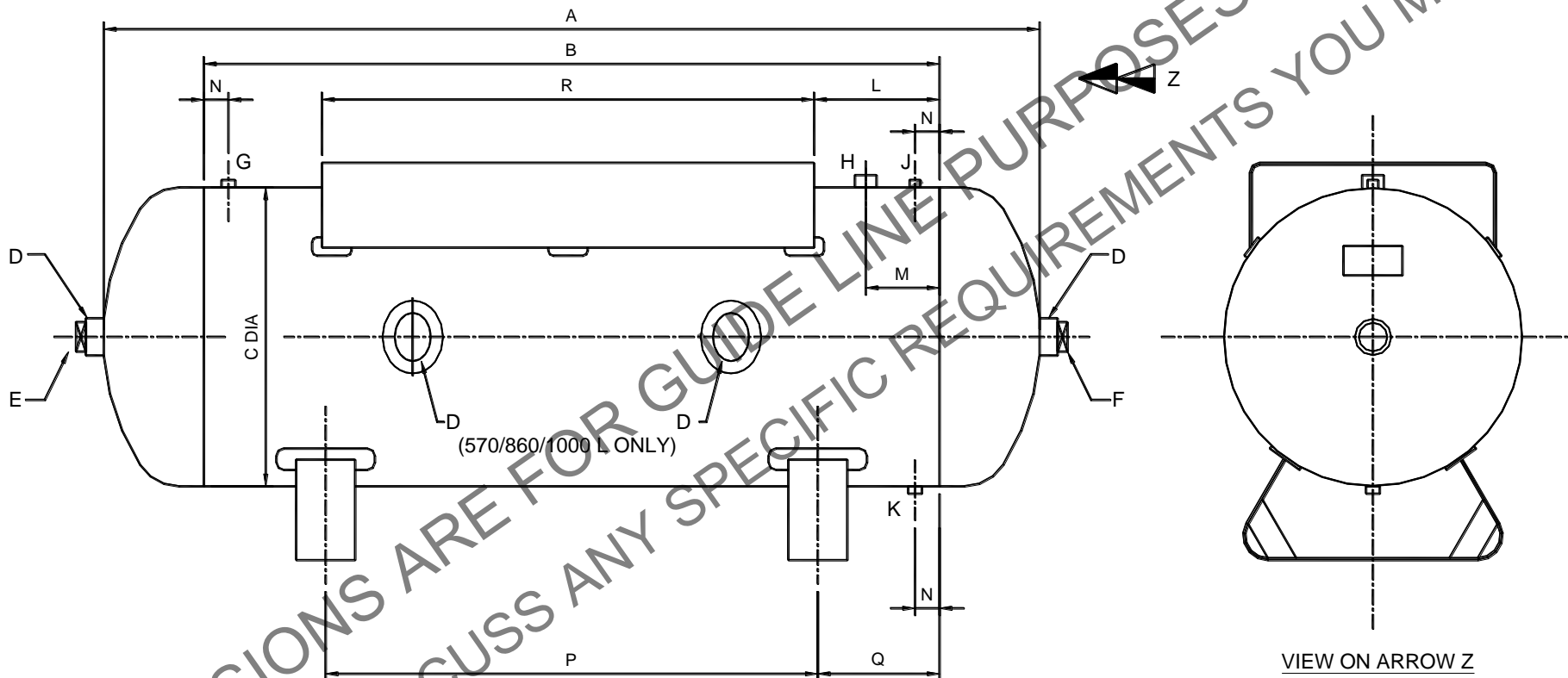
All Dims in mm unless otherwise stated.  
All screwed connects BSP.

\* Please note, if top saddles are required, please note this on any correspondence as vessels are supplied without as standard.



# Standard Range of Air Receivers.

## Horizontal Air Receivers 50 to 1000 Litres.



### **nomenclature:**

A	Overall Length	G	Relief valve port
B	Shell length	H	Inlet port
C	Diameter	J	Pressure gauge port
D	Inspection port	K	Drain port
E	Screwed plug	L	Distance from weld seam to support saddle
F	Outlet port	M	Distance from weld seam to inlet port
		N	Distance from weld seam to pressure gauge port
		P	Distance between holes in support legs
		Q	Distance to holes in support legs from weld seam
		R	Top saddle length

All Dims in mm unless otherwise stated.  
All screwed connects BSP.



# Standard Range of Air Receivers.

## Horizontal Air Receivers 1200 to 5000 Litres.

Vessel Size in litres						
	1200	1500	2000	2830	3800	5000
<b>A</b>	1676	2000	2000	2000	3000	4000
<b>B</b>	930	930	1016	1246	1246	1246
<b>C</b>	3"	3"	4"	4"	4"	4"
<b>D</b>	3/8"	3/8"	3/8"	3/8"	3/8"	3/8"
<b>E</b>	3/4"	3/4"	1"	1"	1"	1"
<b>F</b>	3/4"	3/4"	3/4"	3/4"	3/4"	3/4"
<b>G</b>	MP3	MP3	MP3	MP3	MP3	MP3
<b>H</b>	250	380	380	380	380	380
<b>J</b>	200	300	300	300	300	300
<b>K</b>	305	380	380	380	380	380
<b>L</b>	75	75	75	75	75	75
<b>M</b>	120	120	120	120	120	120
<b>N</b>	250	300	300	300	500	500
<b>P</b>	1176	1400	1400	1400	2000	3000
<b>Q</b>	2200	2520	2630	2770	3770	4770
<b>R</b>	1194	1194	1305	1516	1516	1516
<b>Weight (kg)</b>	420	440	685	880	1130	1375

### nomenclature:

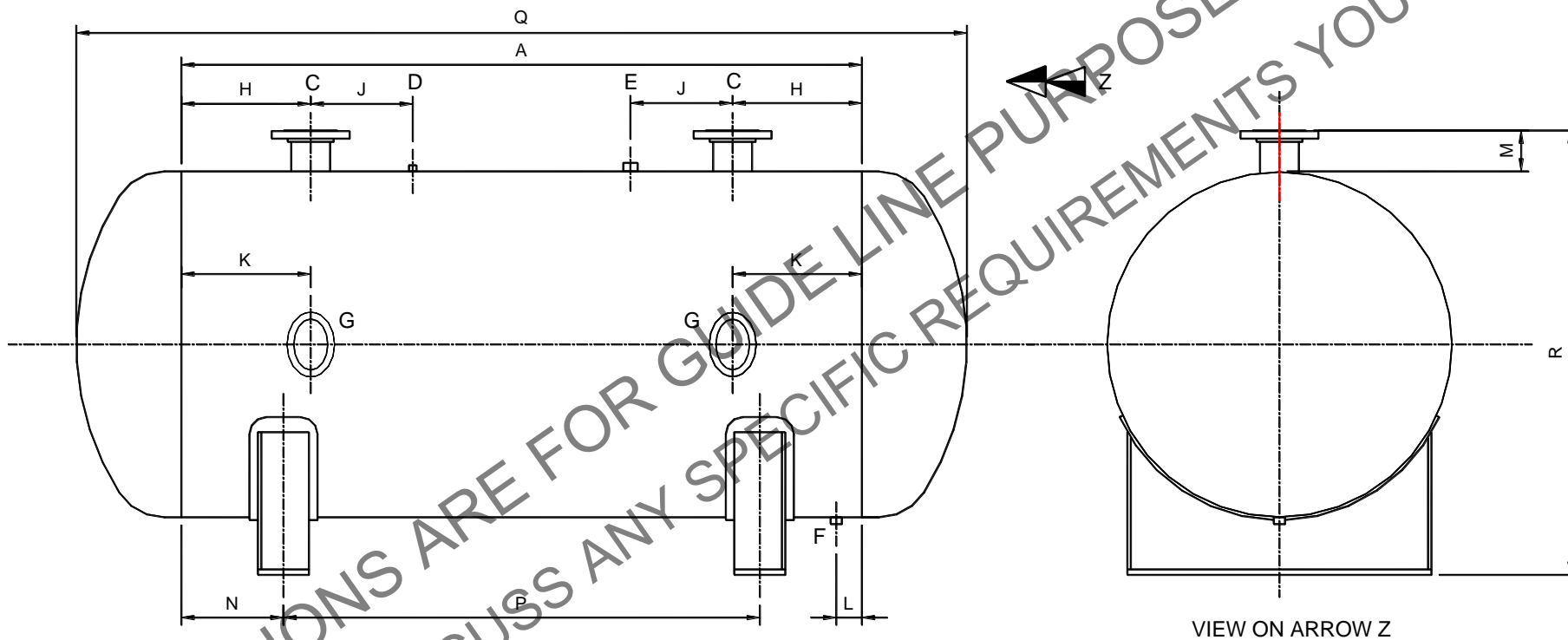
A	Shell Length	H	Dimension from end of shell to centre of connection
B	Diameter	J	Dimension between connections
C	Inlet and Outlet	K	Dimension from end of shell to centre of inspection port
D	Pressure gauge port	L	Distance from end of shell to centre of drain port
E	Relief valve port	M	Stand out of flange to shell
F	Drain valve port	N	Distance from end of shell to centre line of base
G	Inspection ports supplied with covers	P	Distance between bases
		Q	Overall length
		R	Overall height

All Dims in mm unless otherwise stated.  
All screwed connects BSP.



# Standard Range of Air Receivers.

## Horizontal Air Receivers 1200 to 5000 Litres.



### **nomenclature:**

A	Shell Length	H	Dimension from end of shell to centre of connection
B	Diameter	J	Dimension between connections
C	Inlet and Outlet	K	Dimension from end of shell to centre of inspection port
D	Pressure gauge port	L	Distance from end of shell to centre of drain port
E	Relief valve port	M	Stand out of flange to shell
F	Drain valve port	N	Distance from end of shell to centre line of base
G	Inspection ports supplied with covers	P	Distance between bases
		Q	Overall length
		R	Overall height

All Dims in mm unless otherwise stated.  
All screwed connects BSP.